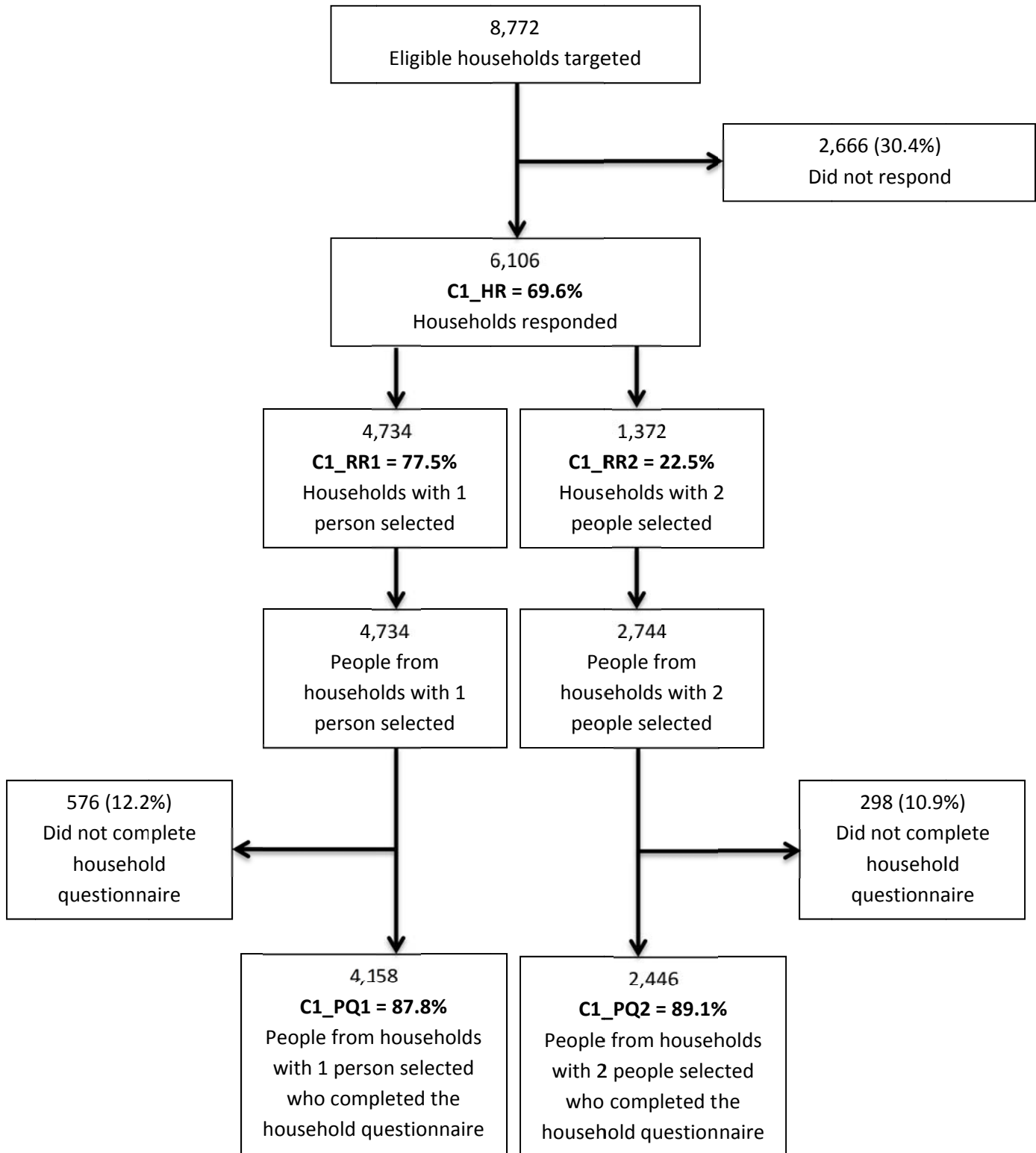


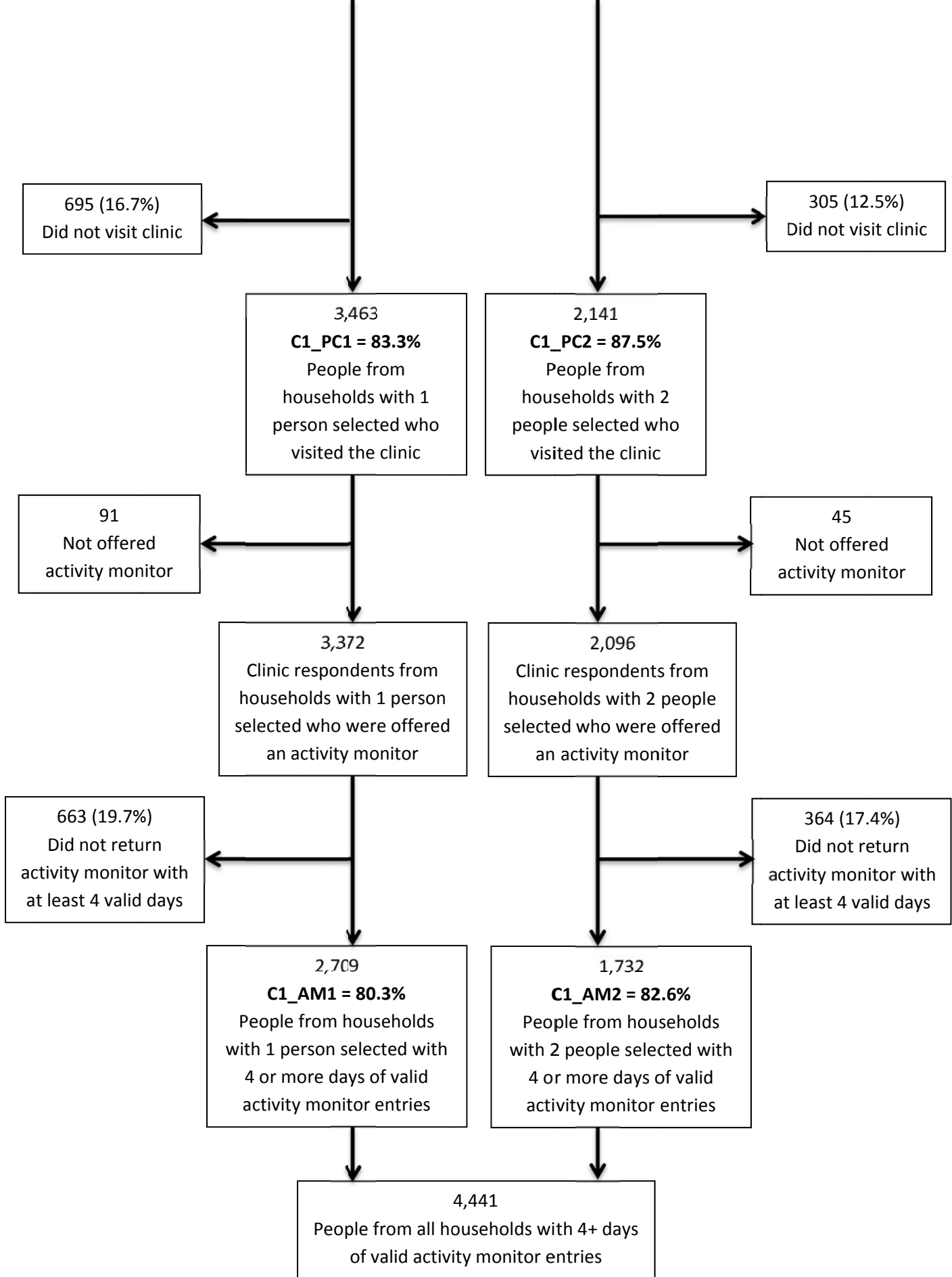
**Appendix 1 (as supplied by the authors):
Flow diagram of CHMS activity monitor participants – cycle 1¹**



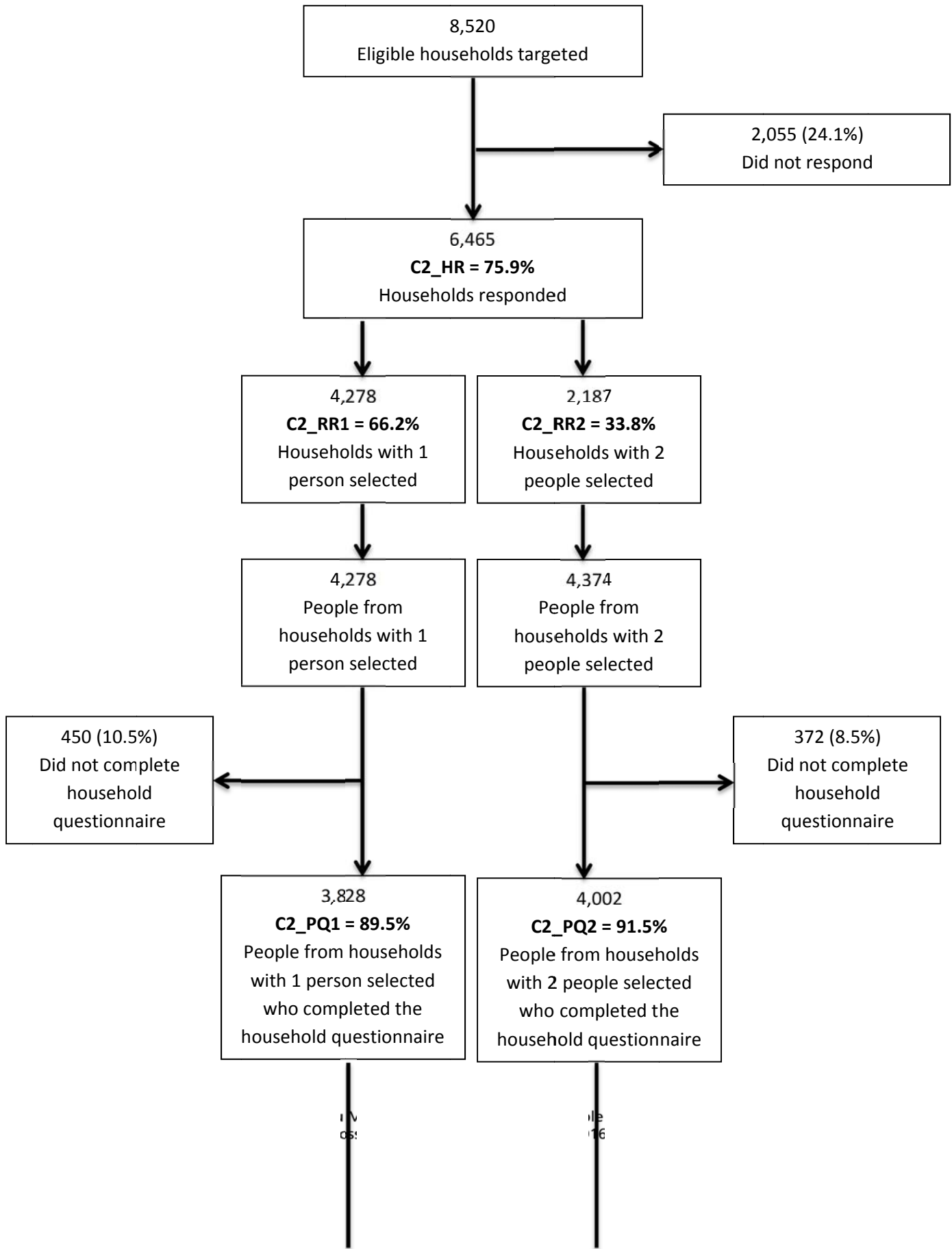
Appendix to: Thielman J, Manson H, Chiu M, et al. Residents of highly walkable neighbourhoods in Canadian urban areas do substantially more physical activity: a cross-sectional analysis. *CMAJ Open* 2016. DOI:10.9778/cmajo.20160068.

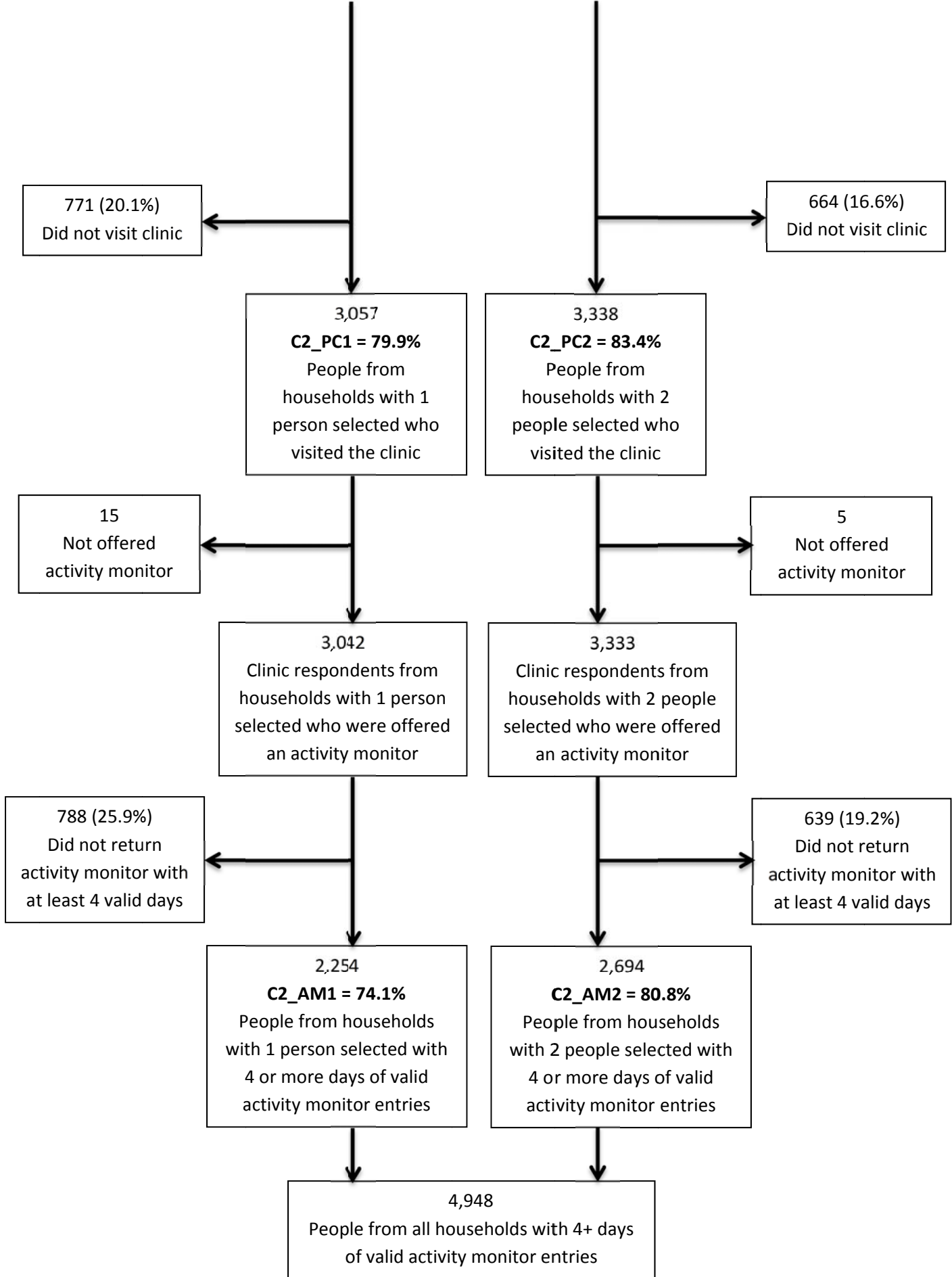
Copyright © 2016 The Author(s) or their employer(s).

To receive this resource in an accessible format, please contact us at cmajgroup@cmaj.ca.



Flow diagram of CHMS activity monitor participants – cycle 2²





CHMS activity monitor response rate

Activity monitor combined response rate for cycle 1 (where C1_HR, C1_RR1, C1_PQ1, C1_PC1, C1_AM1, C1_RR2, C1_PQ2 and C1_PC2, C1_AM2 are defined in the flow charts):

$$\begin{aligned} &= C1_AMCBRR = C1_HR * [(C1_RR1 * C1_PQ1 * C1_PC1 * C1_AM1) + (C1_RR2 * C1_PQ2 * \\ &\quad C1_PC2 * C1_AM2)] \\ &= 0.696 * [(0.775 * 0.878 * 0.833 * 0.803) + (0.225 * 0.891 * 0.875 * 0.826)] \\ &= 0.696 * [0.455 + 0.145] \\ &= 0.418 \end{aligned}$$

Activity monitor combined response rate for cycle 2 (where C2_HR, C2_RR1, C2_PQ1, C2_PC1, C2_AM1, C2_RR2, C2_PQ2 and C2_PC2, C2_AM2 are defined in the flow charts):

$$\begin{aligned} &= C2_AMCBRR = C2_HR * [(C2_RR1 * C2_PQ1 * C2_PC1 * C2_AM1) + (C2_RR2 * C2_PQ2 * \\ &\quad C2_PC2 * C2_AM2)] \\ &= 0.759 * [(0.662 * 0.895 * 0.799 * 0.741) + (0.338 * 0.915 * 0.834 * 0.808)] \\ &= 0.759 * [0.351 + 0.208] \\ &= 0.424 \end{aligned}$$

Average response rate across cycle 1 and cycle 2:

$$\begin{aligned} &= (C1_AMCBRR + C2_AMCBRR) / 2 \\ &= (0.418 + 0.424) / 2 \\ &= 0.421 \\ &= 42.1\% \end{aligned}$$

References

1. Statistics Canada. Canadian Health Measures Survey Data User Guide: Cycle 1. 2011. http://www23.statcan.gc.ca/imdb-bmdi/document/5071_D2_T1_V1-eng.htm#a5_3_2_2. Accessed March 3, 2016.
2. Statistics Canada. Canadian Health Measures Survey (CHMS). Detailed information for August 2009 to November 2011 (Cycle 2). 2012. <http://www23.statcan.gc.ca/imdb/p2SV.pl?Function=getSurvey&Id=62444#a4>. Accessed March 3, 2016.

