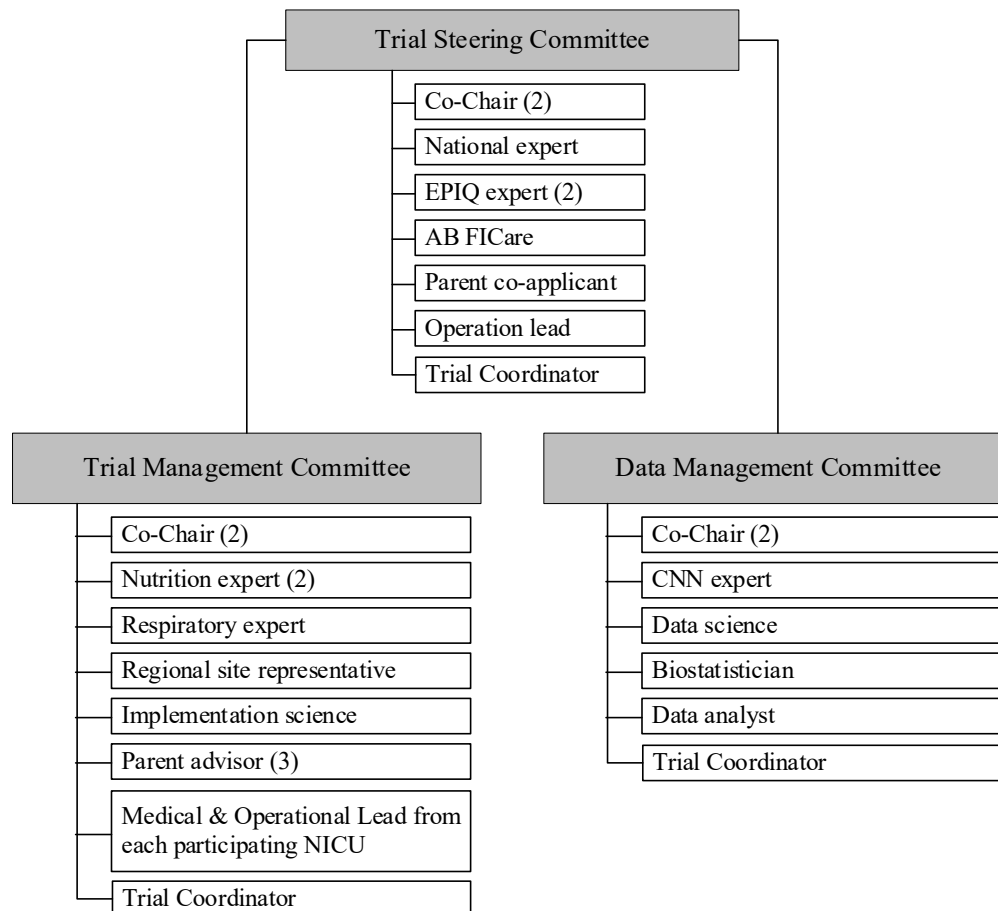


Appendix 8: The ABC-QI Trial Organizational Chart and Committees



- **Trial Steering Committee:** oversees the trial process and address any concerns with the execution and management.
- **Trial Management Committee:** responsible for daily management of the trial, implementing EPIQ collaborative QI interventions during each transition period and supporting each NICU local QI team.
- **Data Management Committee:** manage and maintain the trial database and data dictionary.