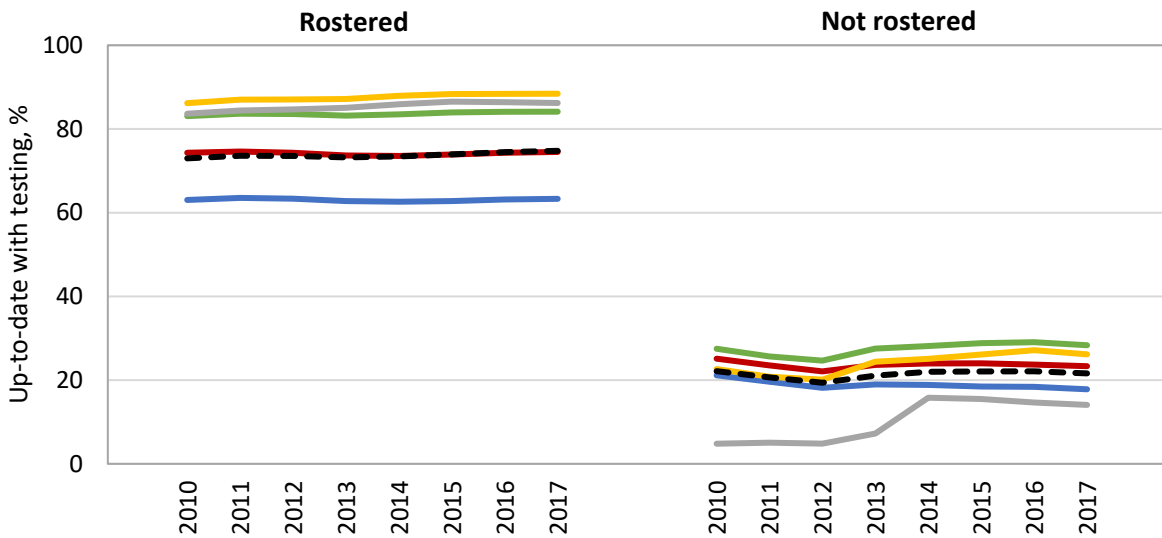
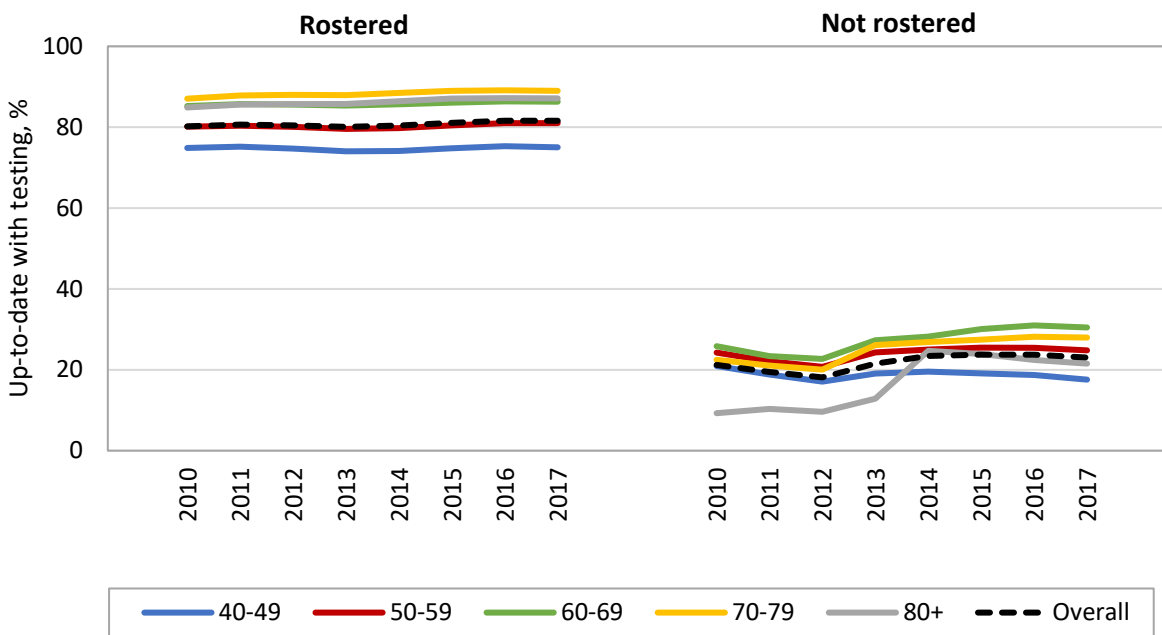


**Appendix 4.** Up-to-date glucose testing rates among adults aged 40+ years in Ontario, by rostering to a primary care physician, 2010-2017\*

a. Men



b. Women



\* Defined as at least one HbA1c, plasma/serum glucose or oral glucose tolerance test in the prior three years, and excludes people diagnosed with diabetes prior to the study period.

† Includes individuals formally rostered with a primary care physician or who receive the majority of their primary care from a specific primary care physician (virtually rostered).