

Supplementary Material

eTable 1. Timeline of selected important events during the first wave

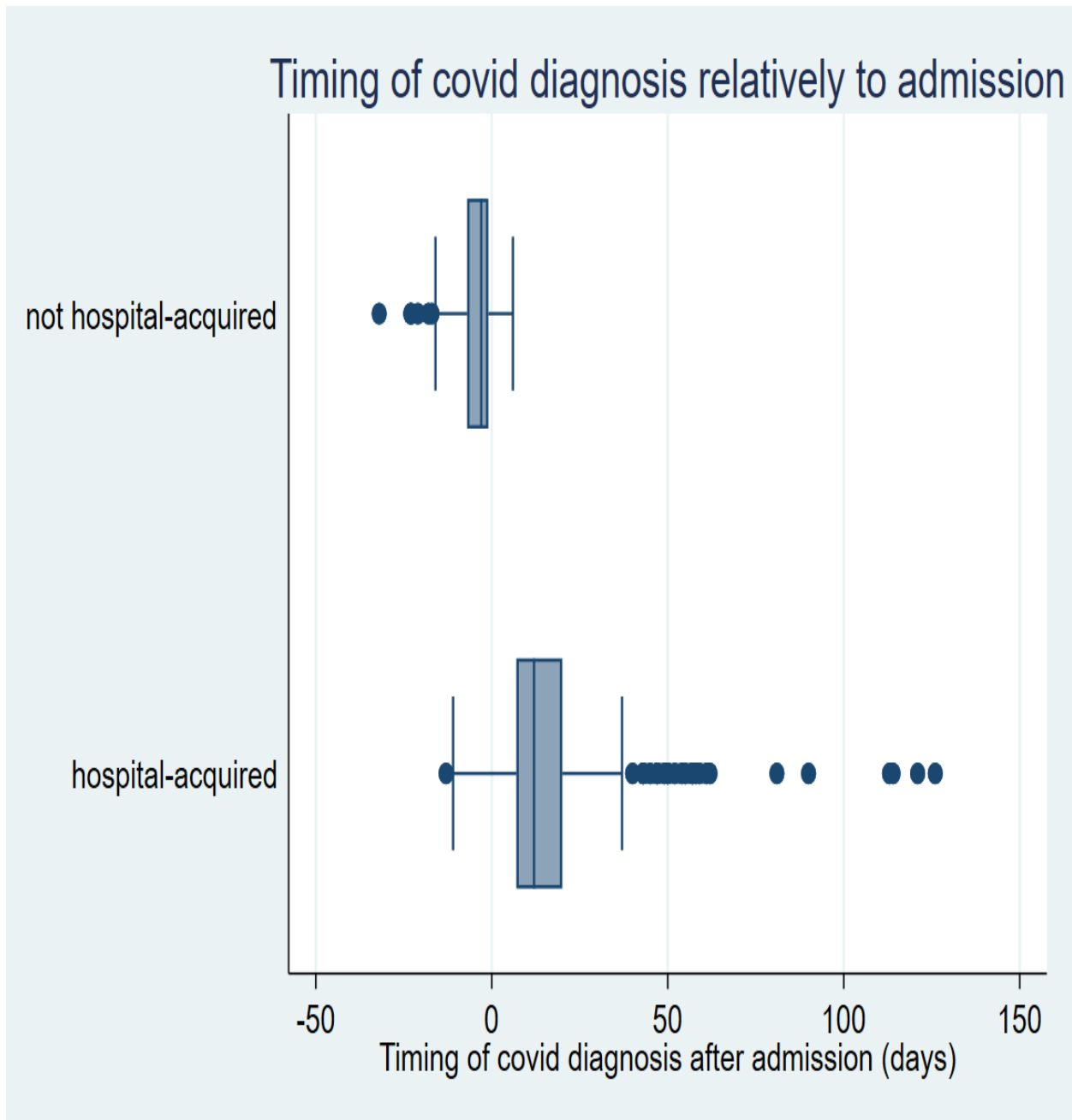
Date	Events
March 17 th	Visitor restrictions
March 19 th	SARS-CoV-2 PCR implemented on-site at the hospital laboratory
March 20 th	COVID-19 care centre designation for the hospital and opening of the first COVID-19 ward
March 26 th	Stopped sending samples to public health reference laboratory for SARS-CoV-2 PCR confirmation
March 30 th	First COVID-19 outbreak on a ward. Implementation of a universal masking policy on outbreak ward in response.
April 4 th	Opening of 2 nd COVID-19 ward
April 7 th	Universal masking policy implemented for all healthcare workers within 2 meters of patients
April 8 th	Opening of 3 rd COVID-19 ward
April 10 th	Directive about prolonged use of medical mask
April 16 th	Outbreak on a 2 nd ward
April 17 th	Outbreak on a 3 rd and 4 th ward
April 17 th	Opening of 4 th COVID-19 ward
April 21 st	Outbreak on a 5 th ward
April 21 st	Introduction of a universal testing strategy for all patients on wards in outbreak (testing symptomatic and asymptomatic alike)
April 23 rd	Outbreak on a 6 th ward
April 23 rd	Universal masking policy extended to all hospital areas, not just within 2 meters of patients Universal eye protection policy implemented for all healthcare workers within 2 meters of patients
May 4 th	SARS-CoV-2 PCR testing for all patients on admission
May 25 th	Outbreak on a 7 th ward
May 18 th – June 10 th	Progressive end of all the outbreaks on various wards
May 25 th – June 5 th	Closure of all COVID-19 wards except one

eTable 2. Sensitivity analysis: Multivariable logistic regression of factors associated with COVID-19 mortality; suspected hospital-acquired switched to non-hospital acquired

Factors	Odds Ratio	95 % Confidence interval	P value
Hospital-acquired COVID-19			
<75 years old	2.05	1.06 to 3.97	0.034
75-84 years old	0.87	0.43 to 1.74	0.691
≥85 years old	0.69	0.37 to 1.29	0.30
Sex			
Female	0.61	0.42 to 0.88	0.007
Solid tumor			
Localized	1.11	0.66 to 1.87	0.40
Metastatic	6.74	3.26 to 13.98	0.001
Hematological malignancy	7.08	2.57 to 19.47	0.001
Moderate to severe chronic renal disease*	3.00	1.76 to 5.10	0.001
Diabetes	1.17	0.80 to 1.73	0.418
COPD	1.07	0.67 to 1.70	0.77
Myocardial infarction	0.91	0.47 to 1.76	0.786

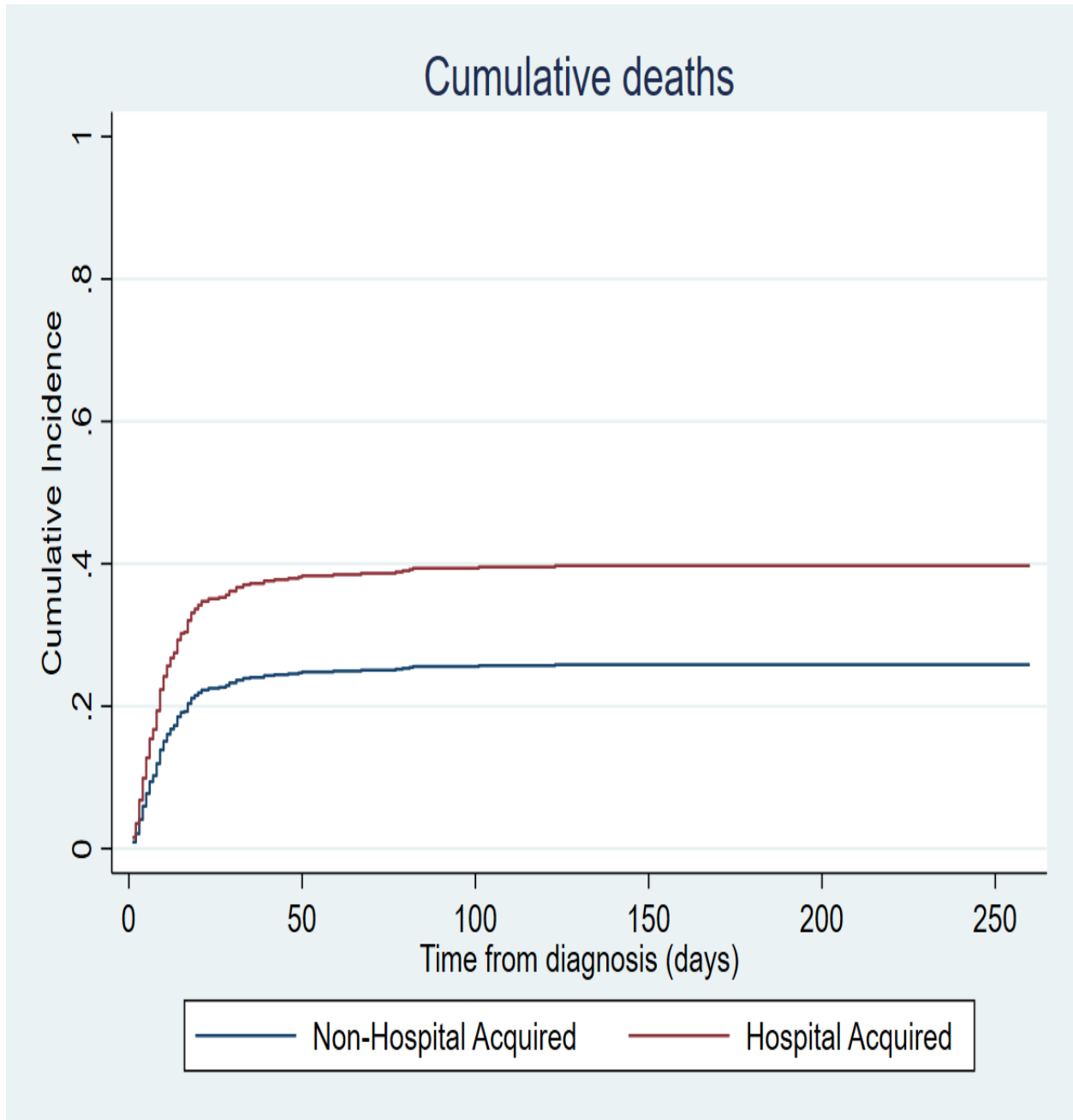
* Moderate to severe chronic renal disease defined as creatinine > 265 umol/L COPD: COPD: chronic obstructive pulmonary disease

eFigure 1. Timing of Covid-19 diagnosis from Admission day



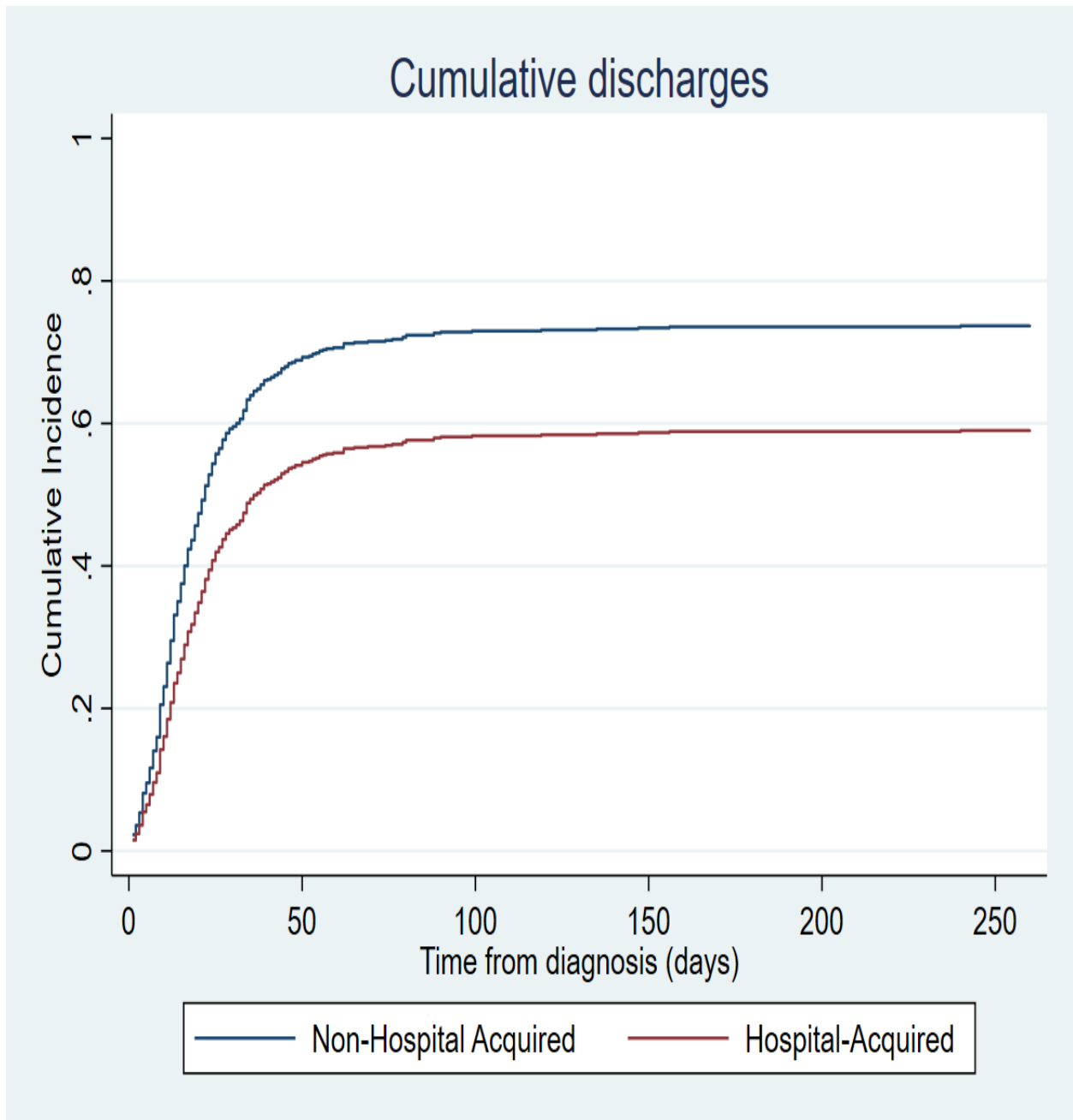
Box plot comparing the time of diagnosis from admission day between hospital acquired and non-hospital acquired Covid-19 patients. Some cases were diagnosed before admission (outpatient setting). Also, we had transfers from other institutions and some patients acquired Covid-19 during one episode of care and were then re-admitted.

eFigure 2



Cumulative incidence plot with competing risk of death in patients with non- and hospital-acquired COVID-19 infection

eFigure 3



Cumulative incidence plot with competing risk of discharge in patients with non- and hospital-acquired COVID-19 infection