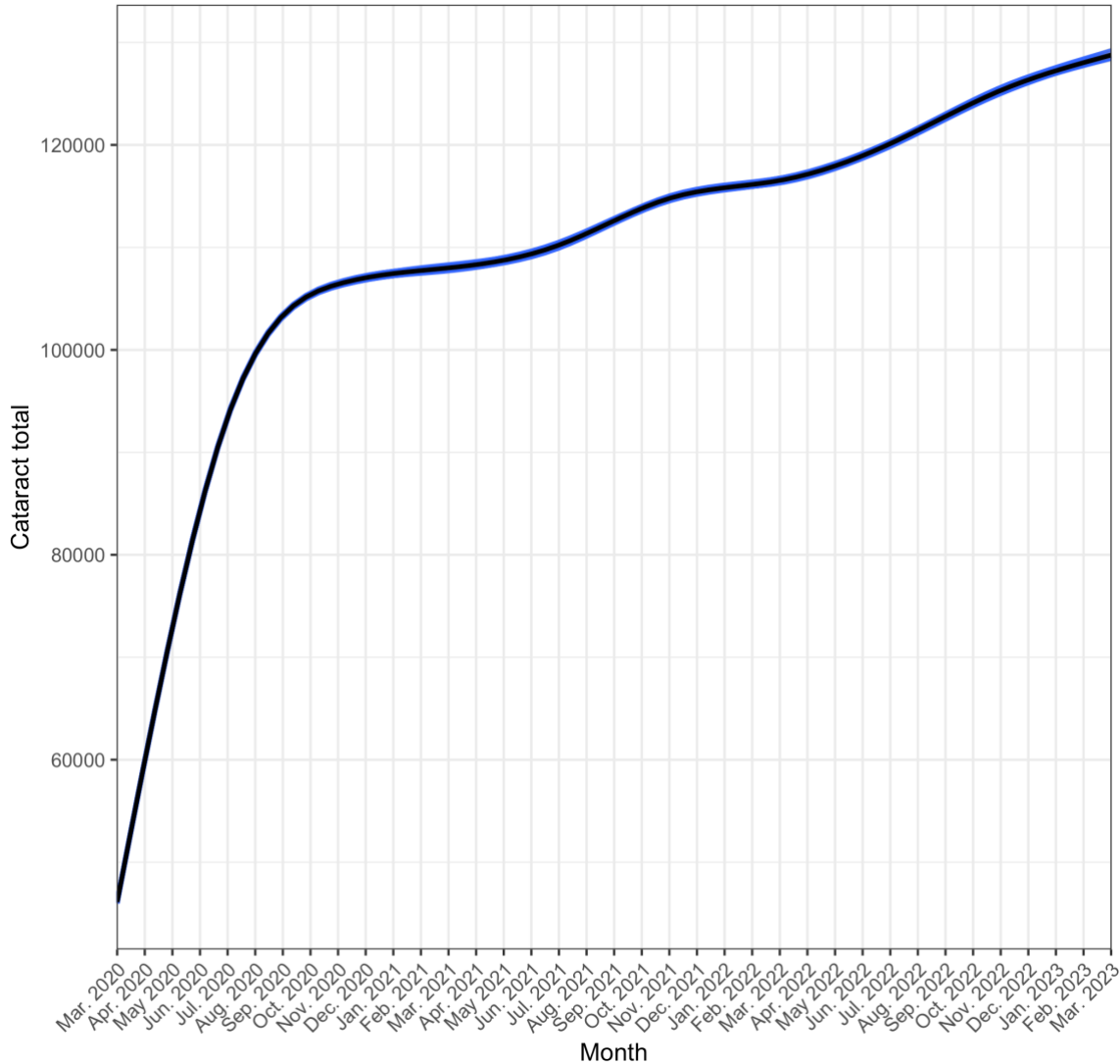


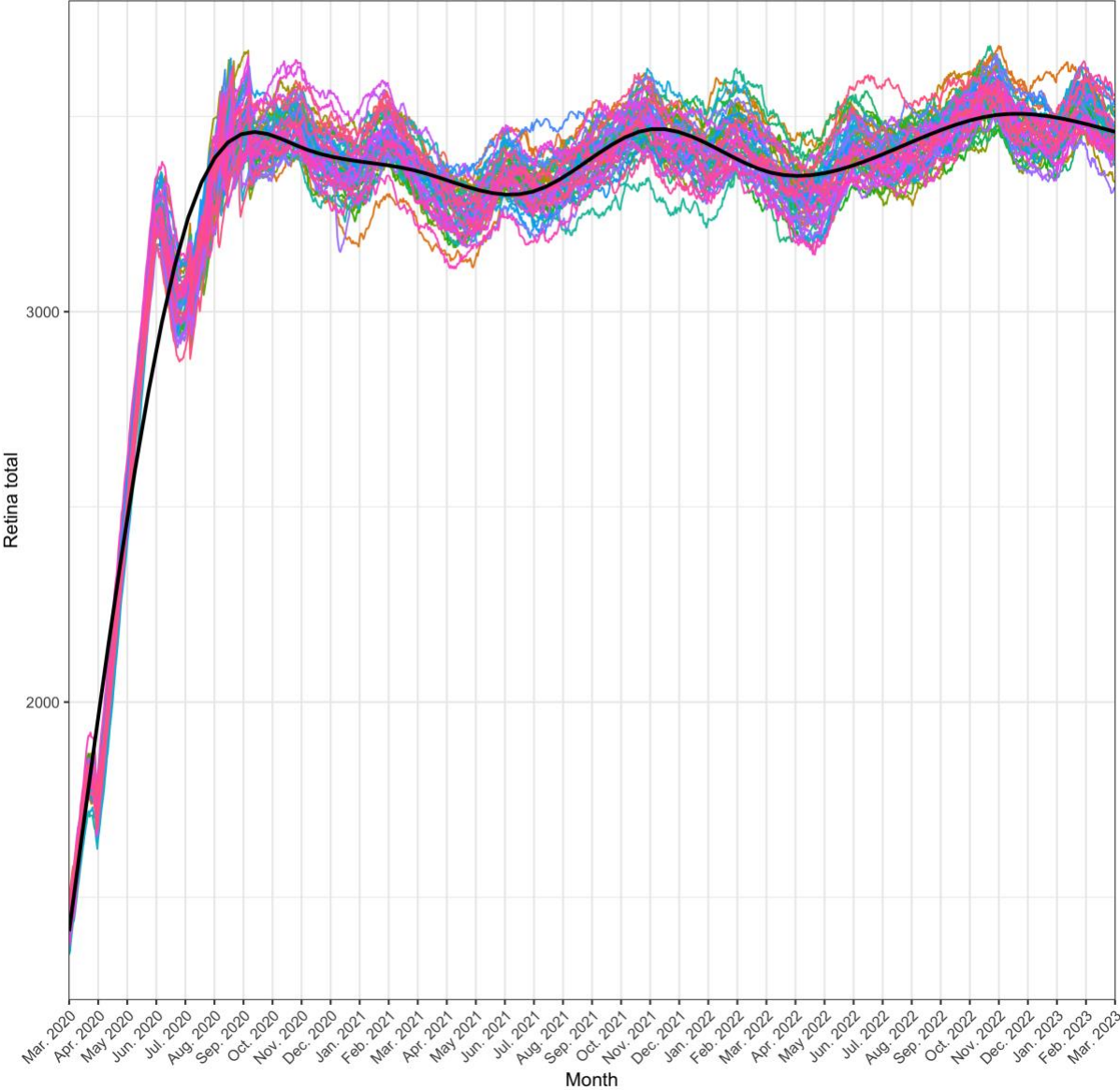
# Supplemental Files

**Supplemental Figure 1.** Graphs depicting probabilistic sensitivity analysis (with 50 possible scenarios for 240,000 patients each) as a part of the microsimulation model. Each of the clustered lines represent estimates of the total number of patients on the wait list for each of the subspecialty types including cataract surgery (A, cataract and combination cataract and other procedures), retina surgery (B, vitrectomy and other vitreoretinal surgery), glaucoma surgery (C, glaucoma filter/seton and other glaucoma surgeries), corneal surgery (D, corneal transplant and other cornea surgery), oculoplastics (E) and adult strabismus surgery (F). Note: The estimates for cataract surgery (A) are clustered closely due to small variability in the outcomes between each scenario.

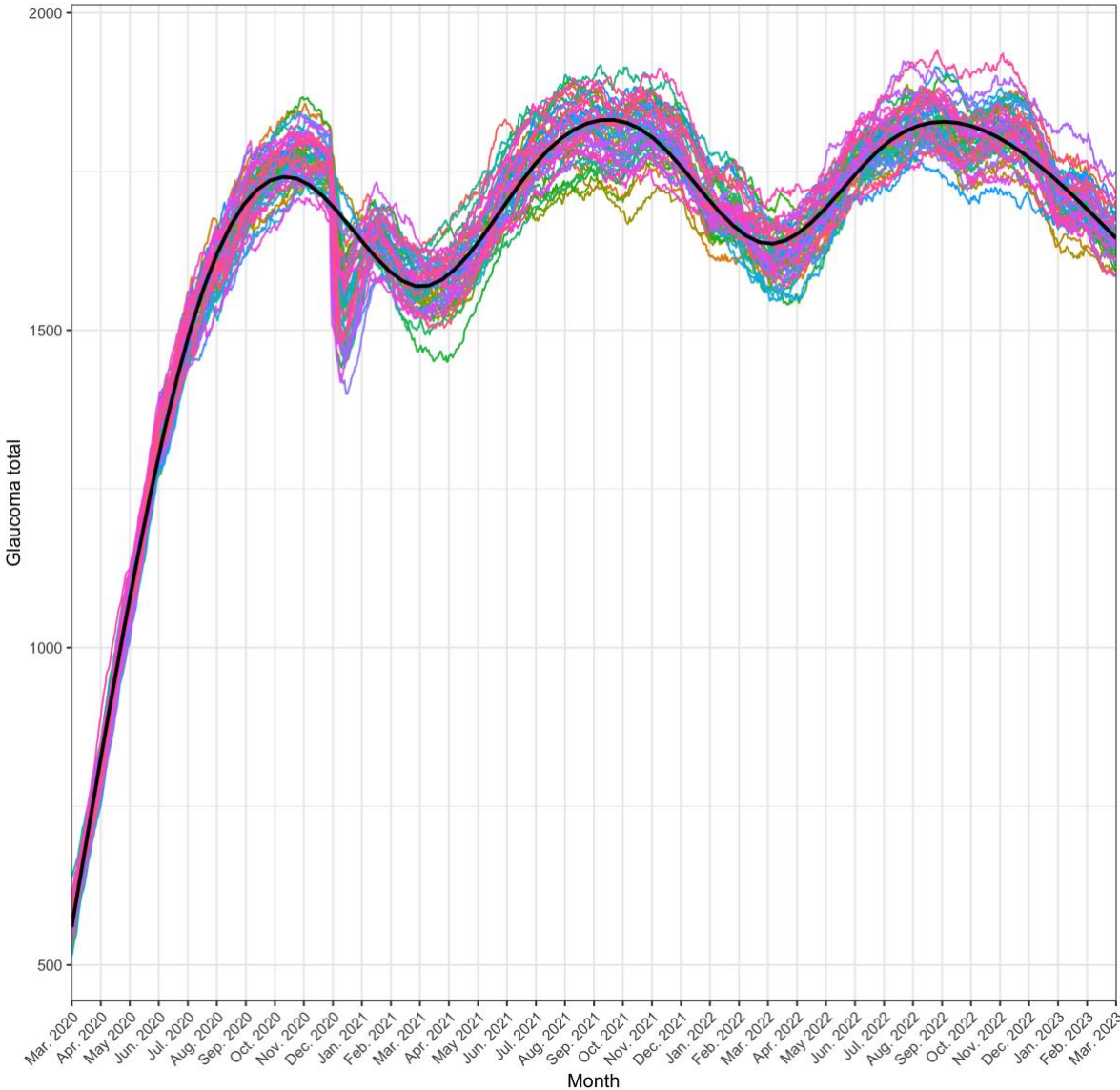
A) Cataract



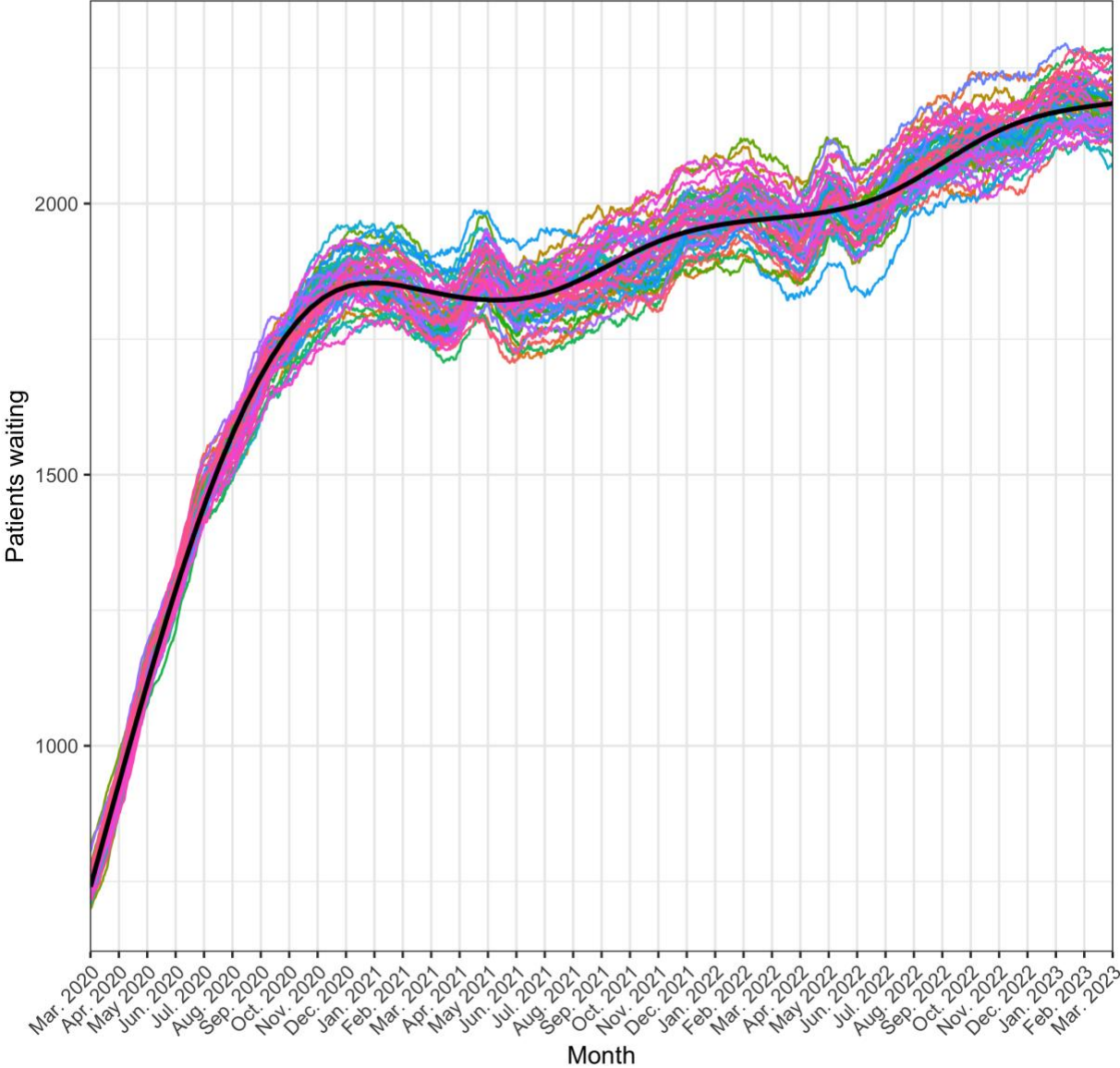
B) Retina



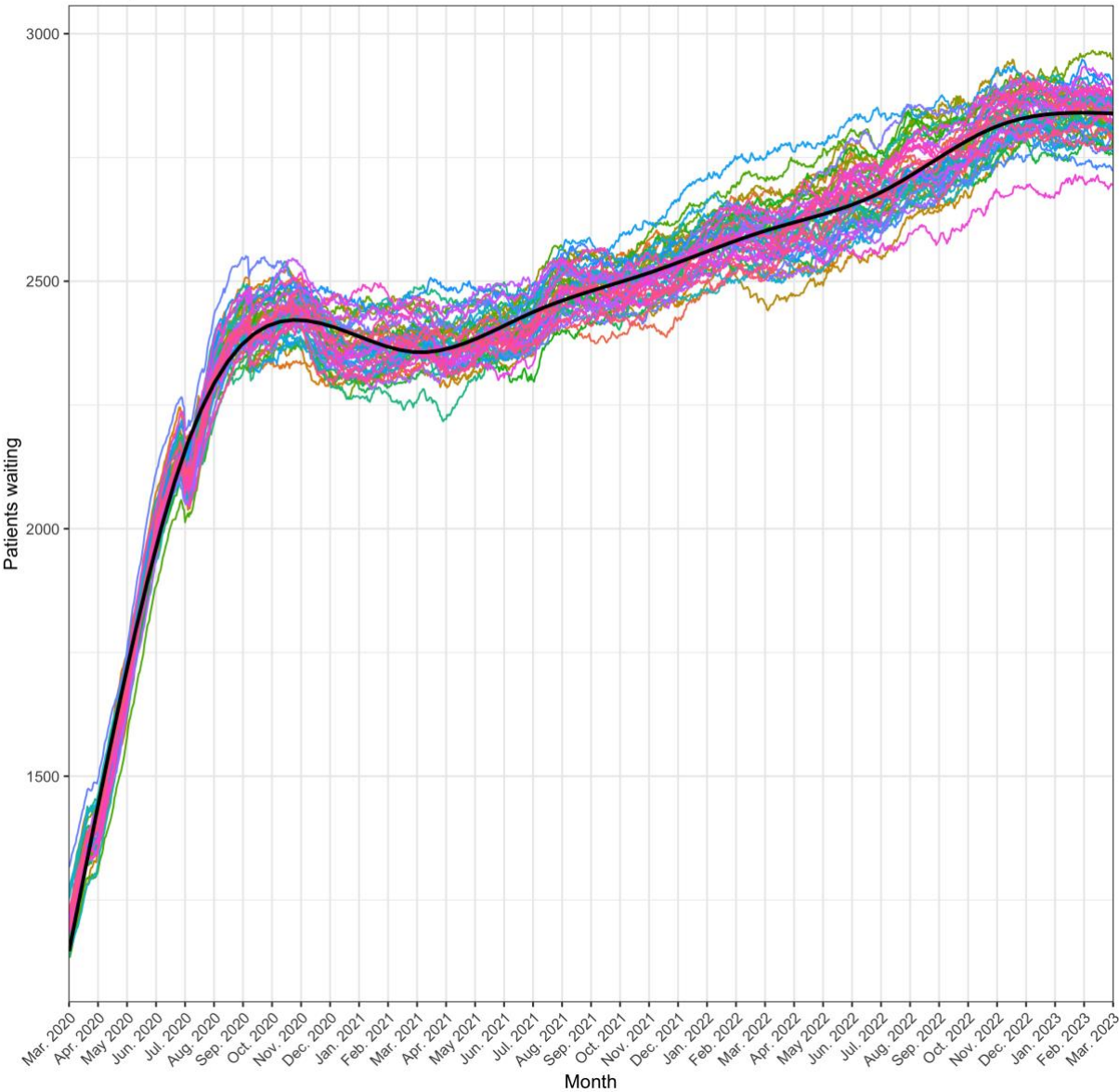
C) Glaucoma



D) Cornea



E) Oculoplastics



F) Strabismus

