

## Appendix 1: Supplementary tables and figures

**Table 1: List of all Prescribing Regions and Border Crossings (US-Canada) contained within each Region**

Prescribing Region <i>Border Crossings</i>	# Crossings	Canadian Province	US State
<b>ALBERTA-MONTANA*</b> <i>Whitlash-Aden</i> <i>Piegan-Carway</i> <i>Sweetgrass-Coutts</i> <i>Del Bonita-Del Bonita</i> <i>Wildhorse-Wildhorse</i> <i>Chief Mountain</i> <i>Willow Creek</i>	<b>7</b>	<b>Alberta</b>	<b>Montana</b>
<b>BC-IDAHO-MONTANA*</b> <i>Porthill-Rykerts</i> <i>Roosville-Roosville</i> <i>Eastport-Kingsgate</i>	<b>3</b>	<b>British Columbia</b>	<b>Idaho and Montana</b>
<b>BC-WASHINGTON EAST</b> <i>Frontier-Paterson</i> <i>Metaline Falls-Nelway</i> <i>Boundary-Waneta</i>	<b>3</b>	<b>British Columbia</b>	<b>Washington</b>
<b>BC-WASHINGTON CENTRAL</b> <i>Laurier-Cascade</i> <i>Danville-Carson</i> <i>Ferry-Midway</i> <i>Oroville-Osoyoos</i>	<b>4</b>	<b>British Columbia</b>	<b>Washington</b>
<b>BC-WASHINGTON NIGHTHAWK</b> <i>Nighthawk-Chopaka</i>	<b>1</b>	<b>British Columbia</b>	<b>Washington</b>
<b>BC-WASHINGTON SUMAS*</b> <i>Sumas-Abbotsford Huntington</i>	<b>1</b>	<b>British Columbia</b>	<b>Washington</b>
<b>BC-WASHINGTON WEST *</b> <i>Blaine-Pacific Highway</i> <i>Blaine-Douglas</i>	<b>2</b>	<b>British Columbia</b>	<b>Washington</b>
<b>BC-WASHINGTON LYNDEN</b> <i>Lynden-Aldergrove</i>	<b>1</b>	<b>British Columbia</b>	<b>Washington</b>
<b>BC-ALASKA*</b> <i>Ketchikan</i> <i>Dalton Cache-Prince Rupert</i>	<b>2</b>	<b>British Columbia</b>	<b>Alaska</b>
<b>BC ISLAND-WASHINGTON*</b> <i>Anacortes</i> <i>Friday Harbor-Washington State Ferry Terminal</i>	<b>2</b>	<b>British Columbia</b>	<b>Washington</b>
<b>BC ISLAND-WASHINGTON BELLEVILLE</b>	<b>1</b>	<b>British Columbia</b>	<b>Washington</b>

Appendix to: Gomes T, Paterson JM, Mukati M, et al; Canadian Network for Observational Drug Effect Studies investigators. Retrospective analysis of trends in dispensing long-acting non-tamper-resistant oxycodone near the Canada-United States border. *CMAJ Open* 2015.

DOI:10.9788/cmajo.20140103. Copyright © 2015 The Author(s) or their employer(s).

To receive this resource in an accessible format, please contact us at [cmajgroup@cmaj.ca](mailto:cmajgroup@cmaj.ca).

<i>Port Angeles-Belleville Terminal</i>			
<b>MANITOBA-MINNESOTA</b> <i>Lancaster-Tolstoi</i> <i>Pembina-Emerson</i> <i>Pinecreek-Piney</i> <i>Roseau-South Junction</i> <i>Warroad-Sprague</i>	<b>5</b>	<b>Manitoba</b>	<b>Minnesota</b>
<b>MANITOBA CENTRAL-N DAKOTA*</b> <i>Maida-Windygate</i> <i>Neche-Gretna</i> <i>Hannah-Snowflake</i>	<b>3</b>	<b>Manitoba</b>	<b>North Dakota</b>
<b>MANITOBA WCENTRAL-N DAKOTA*</b> <i>Sarles-Crystal City</i> <i>St. John-Lena</i> <i>Dunseith-Boissevain</i> <i>Hansboro-Cartwright</i>	<b>4</b>	<b>Manitoba</b>	<b>North Dakota</b>
<b>WEST MANITOBA-N DAKOTA</b> <i>Westhope-Coulter</i> <i>Carbury-Goodlands</i> <i>Antler-Lyleton</i>	<b>3</b>	<b>Manitoba</b>	<b>North Dakota</b>
<b>MANITOBA-N DAKOTA WALHALLA*</b> <i>Walhalla-Winkler</i>	<b>1</b>	<b>Manitoba</b>	<b>North Dakota</b>
<b>NEW BRUNSWICK-MAINE MILLTOWN</b> <i>Milltown-Milltown</i>	<b>1</b>	<b>New Brunswick</b>	<b>Maine</b>
<b>NEW BRUNSWICK-MAINE NE</b> <i>Madawaska-Edmundston</i> <i>Limestone-Gillespie</i> <i>Hamlin-Grand Falls</i>	<b>3</b>	<b>New Brunswick</b>	<b>Maine</b>
<b>NEW BRUNSWICK-MAINE CAMPOBELLO</b> <i>Lubec-Campobello</i>	<b>1</b>	<b>New Brunswick</b>	<b>Maine</b>
<b>NEW BRUNSWICK-MAINE VANCEBORO</b> <i>Vanceboro-St. Croix</i>	<b>1</b>	<b>New Brunswick</b>	<b>Maine</b>
<b>NEW BRUNSWICK-MAINE NORTH</b> <i>Fort Kent-Clair</i> <i>Van Buren-St. Leonard</i> <i>Fort Fairfield-Andover</i> <i>Easton-River de Chute</i>	<b>3</b>	<b>New Brunswick</b>	<b>Maine</b>
<b>NEW BRUNSWICK-MAINE HOULTON</b> <i>Houlton-Woodstock Road</i>	<b>1</b>	<b>New Brunswick</b>	<b>Maine</b>
<b>NEW BRUNSWICK-MAINE CALAIS</b> <i>Calais-St. Stephen</i>	<b>1</b>	<b>New Brunswick</b>	<b>Maine</b>
<b>ONTARIO EAST-NEW YORK*</b>	<b>3</b>	<b>Ontario</b>	<b>New York</b>

<i>Cape Vincent-Point Alexandria</i> <i>Alexandria Bay-Lansdowne</i> <i>Ogdensburg-Prescott</i>			
<b>ONTARIO EAST-NEW YORK CORNWALL*</b> <i>Massena-Cornwall</i>	<b>1</b>	<b>Ontario</b>	<b>New York</b>
<b>ONTARIO-NEW YORK FORT ERIE*</b> <i>Buffalo-Fort Erie</i>	<b>1</b>	<b>Ontario</b>	<b>New York</b>
<b>ONTARIO-NEW YORK BUFFALO NF*</b> <i>Niagara Falls-Niagara Falls</i> <i>Buffalo-Niagara Falls-Fort Erie and Niagara Falls</i>	<b>2</b>	<b>Ontario</b>	<b>New York</b>
<b>ONTARIO-NEW YORK BUFFALO QUEENSTON*</b> <i>Lewiston-Niagara Falls</i>	<b>1</b>	<b>Ontario</b>	<b>New York</b>
<b>ONTARIO-MICHIGAN WALPOLE FERRY*</b> <i>Algonac-Walpole Island Ferry</i>	<b>1</b>	<b>Ontario</b>	<b>Michigan</b>
<b>ONTARIO-MICHIGAN SOMBRA FERRY*</b> <i>Marine City-Sombra Ferry</i>	<b>1</b>	<b>Ontario</b>	<b>Michigan</b>
<b>ONTARIO-OHIO FERE PELEE*</b> <i>Sandusky-Pelee Island</i>	<b>1</b>	<b>Ontario</b>	<b>Ohio</b>
<b>ONTARIO-MICHIGAN SARNIA*</b> <i>Port Huron-Sarnia</i>	<b>1</b>	<b>Ontario</b>	<b>Michigan</b>
<b>ONTARIO-MICHIGAN DW TUNNEL*</b> <i>Detroit-Windsor</i>	<b>1</b>	<b>Ontario</b>	<b>Michigan</b>
<b>ONTARIO-MICHIGAN AMBASSADOR*</b> <i>Detroit-Windsor</i>	<b>1</b>	<b>Ontario</b>	<b>Michigan</b>
<b>ONTARIO-MINNESOTA RAINY RIVER</b> <i>Baudette-Rainy River</i>	<b>1</b>	<b>Ontario</b>	<b>Minnesota</b>
<b>ONTARIO-MICHIGAN SAULT STE MARIE</b> <i>Sault Ste. Marie-Sault Ste. Marie</i>	<b>1</b>	<b>Ontario</b>	<b>Michigan</b>
<b>ONTARIO-MINNESOTA INT FALLS</b> <i>International Falls-Ranier</i>	<b>1</b>	<b>Ontario</b>	<b>Minnesota</b>
<b>QUEBEC-MAINE ESTCOURT</b> <i>Estcourt Station-Pohenegamook</i>	<b>1</b>	<b>Quebec</b>	<b>Maine</b>
<b>QUEBEC EAST-MAINE</b> <i>St Aurelie-St Aurelie</i> <i>Jackman-Armstrong</i>	<b>2</b>	<b>Quebec</b>	<b>Maine</b>
<b>QUEBEC EAST-MAINE PAMPHILE</b> <i>St. Pamphile-St. Pamphile</i> <i>St-Just-de-Bretenieres-St-Just-de-Bretenieres</i>	<b>2</b>	<b>Quebec</b>	<b>Maine</b>
<b>QUEBEC-MAINE WOBURN</b> <i>Coburn Gore-Woburn</i>	<b>1</b>	<b>Quebec</b>	<b>Maine</b>
<b>QUEBEC-VERMONT EAST</b> <i>Beebe Plain-Stanstead</i>	<b>6</b>	<b>Quebec</b>	<b>Vermont</b>

<i>Pittsburg-Chartierville</i> <i>Beecher Falls-East Hereford</i> <i>Canaan-Hereford Road</i> <i>Derby Line-Stanstead (55)</i> <i>Derby Line-Stanstead (Rte 143)</i>			
<b>QUEBEC-VERMONT CENTRAL</b> <i>East Richford-Glen Sutton</i> <i>Richford-Abercorn</i> <i>North Troy-Highwater</i>	<b>3</b>	<b>Quebec</b>	<b>Vermont</b>
<b>QUEBEC-VERMONT WEST</b> <i>Morses Line-Morses Line</i> <i>West Berkshire-Frelighsburg</i> <i>Pinnacle - East Pinnacle</i> <i>Alburg Springs-Clarenceville</i> <i>Champlain-Rouses Point-Lacolle</i> <i>Champlain- St. Bernard De Lacolle</i> <i>Overton Corners-Localle: Route 221</i> <i>Highgate Springs-Alburg-Phillipsburg-Noyan</i>	<b>8</b>	<b>Quebec</b>	<b>Vermont</b>
<b>QUEBEC-NEW YORK MOOERS*</b> <i>Mooers-Hemmingford</i>	<b>1</b>	<b>Quebec</b>	<b>New York</b>
<b>QUEBEC-NEW YORK WEST*</b> <i>Trout River-Trout River and Jamieson</i> <i>Malone-Trout River</i> <i>Massena-Dundee</i> <i>Cannon's Corner - Covey Hill</i>	<b>4</b>	<b>Quebec</b>	<b>New York</b>
<b>QUEBEC-VERMONT NORTON</b> <i>Norton-Stanhope</i>	<b>1</b>	<b>Quebec</b>	<b>Vermont</b>
<b>SASKATCHEWAN EAST-N DAKOTA</b> <i>Sherwood-Carievale</i> <i>Raymond-Regway</i> <i>Northgate-Northgate</i> <i>Portal-North Portal</i> <i>Fortuna-Oungre</i> <i>Ambrose-Torquay</i>	<b>6</b>	<b>Saskatchewan</b>	<b>North Dakota</b>
<b>SASKATCHEWAN-MONTANA</b> <i>Scobey-Coronach</i> <i>Opheim-West Poplar</i>	<b>2</b>	<b>Saskatchewan</b>	<b>Montana</b>
<b>SASKATCHEWAN WEST-MONTANA</b> <i>Morgan-Monchy</i> <i>Turner-Climax</i>	<b>2</b>	<b>Saskatchewan</b>	<b>Montana</b>
<b>SASKATCHEWAN-N DAKOTA NOONAN</b> <i>Noonan-Estevan</i>	<b>1</b>	<b>Saskatchewan</b>	<b>North Dakota</b>

\*Indicates prescribing region borders on a High Intensity Drug Trafficking Area (HIDTA) in the US

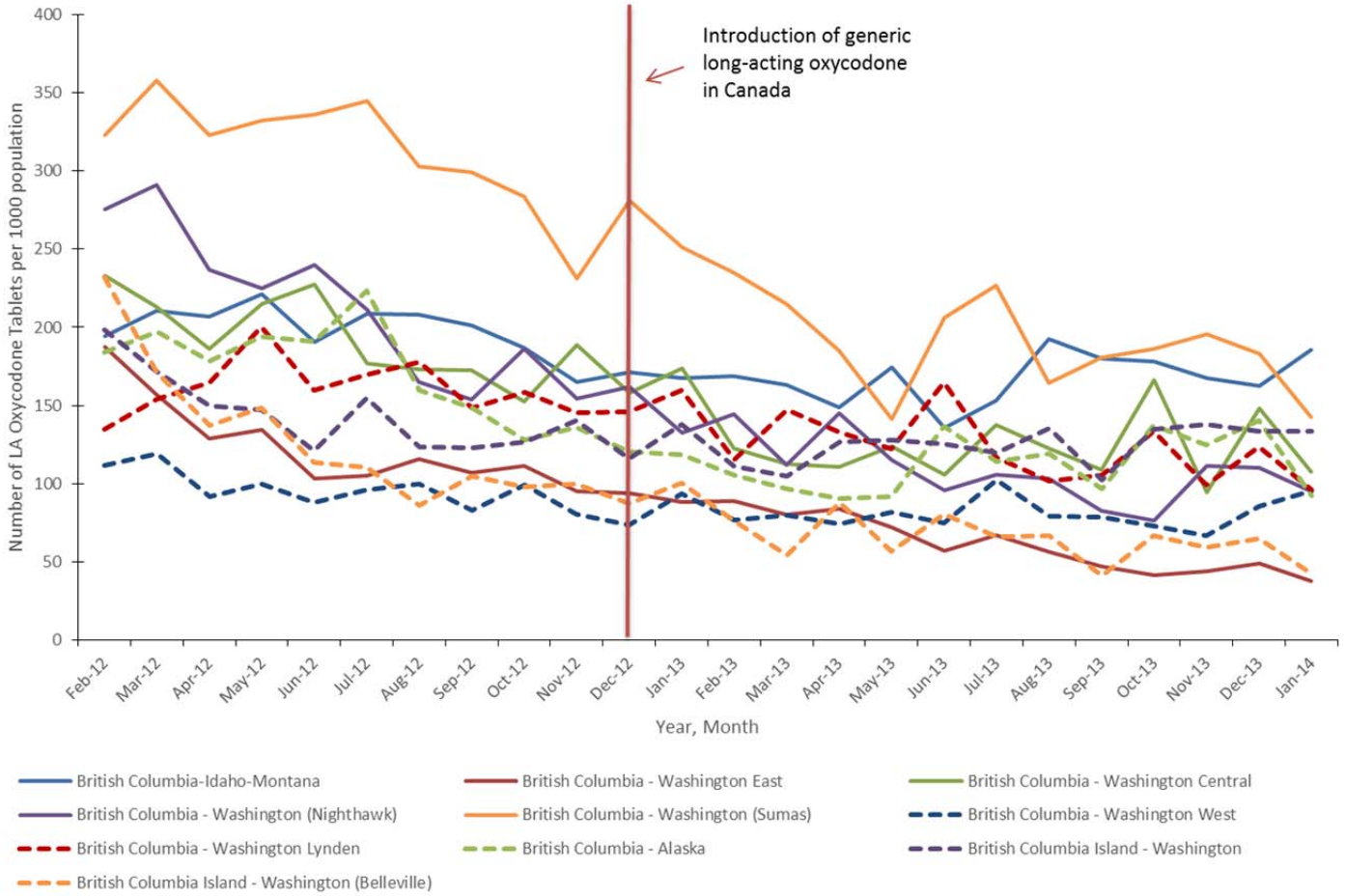
**Table 2: Details of Cities included in Sensitivity Analysis**

<b>Province</b>	<b>City Name</b>	<b>Approximate Distance to Border</b>	<b>Approximate Population Size</b>
Alberta	Lethbridge	104km	89,074
Alberta	Medicine Hat	140km	60,005
British Columbia	Kelowna	115km	117,312
British Columbia	Vancouver	50km	603,502
Manitoba	Winnipeg	106km	663,617
Manitoba	Steinbach	72km	13,524
New Brunswick	Fredericton	93km	56,224
New Brunswick	Saint John	113km	70,063
Quebec	Montreal	66km	1,649,519
Quebec	Sherbrooke	68km	154,601
Saskatchewan	Weyburn	76km	10,484
Saskatchewan	Regina	162km	193,100

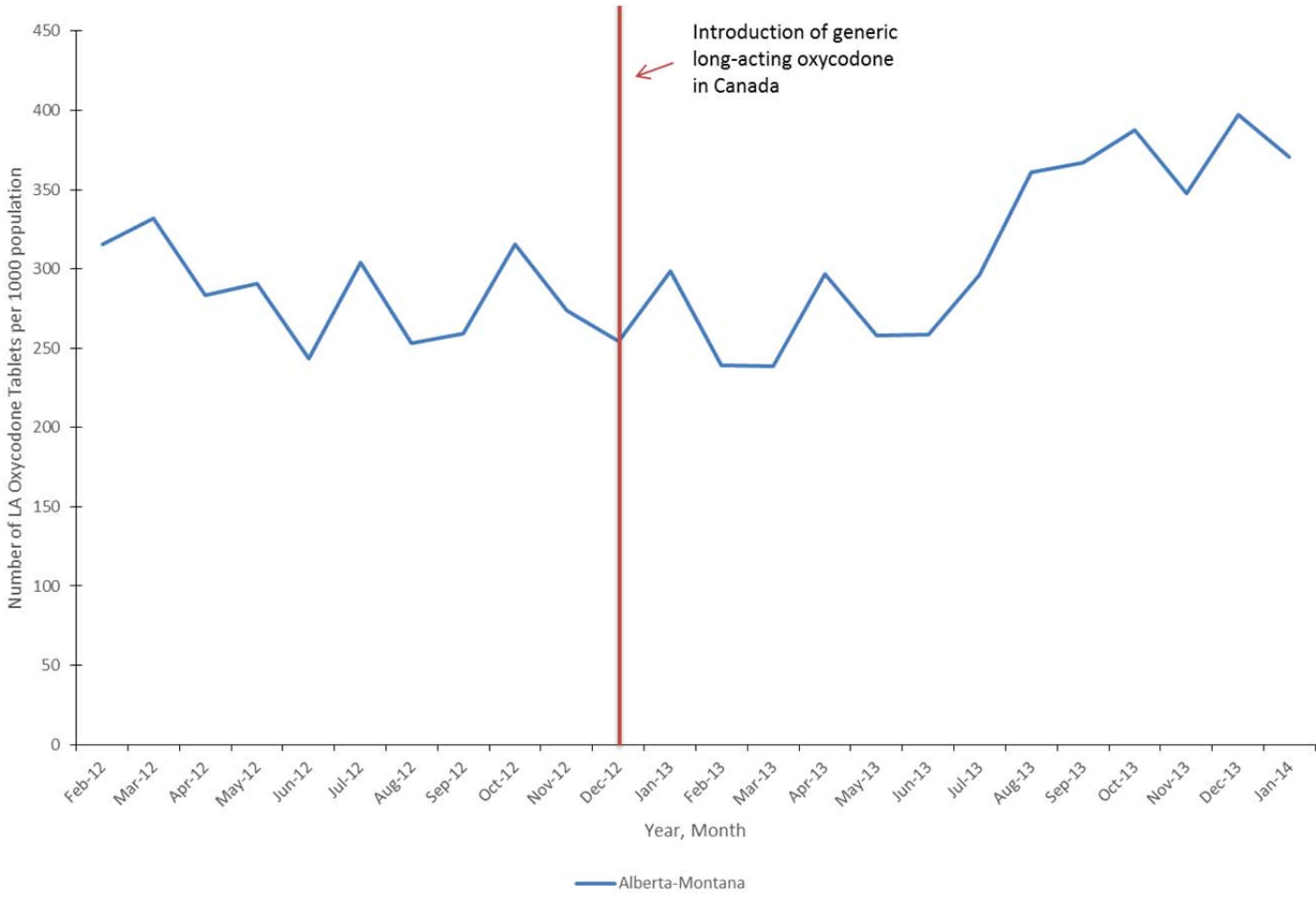
**Table 3: Canadian market share of generic long-acting oxycodone tablets near the US-Canada border following their introduction in Canada. December 2012 – January 2014.**

<b>Province</b>	<b>Number of long-acting oxycodone tablets dispensed</b>	<b>Number of generic long-acting oxycodone tablets dispensed</b>	<b>% generic long-acting oxycodone tablets</b>
Alberta	242,068	3,216	1.3
British Columbia	723,255	124,549	17.2
Manitoba	158,901	4,665	2.9
Ontario	2,162,448	143,549	6.6
Quebec	660,715	193,317	29.3
New Brunswick	402,872	48,112	11.9
Saskatchewan	92,366	125	0.1
<b>Total</b>	<b>4,442,625</b>	<b>517,533</b>	<b>11.6</b>

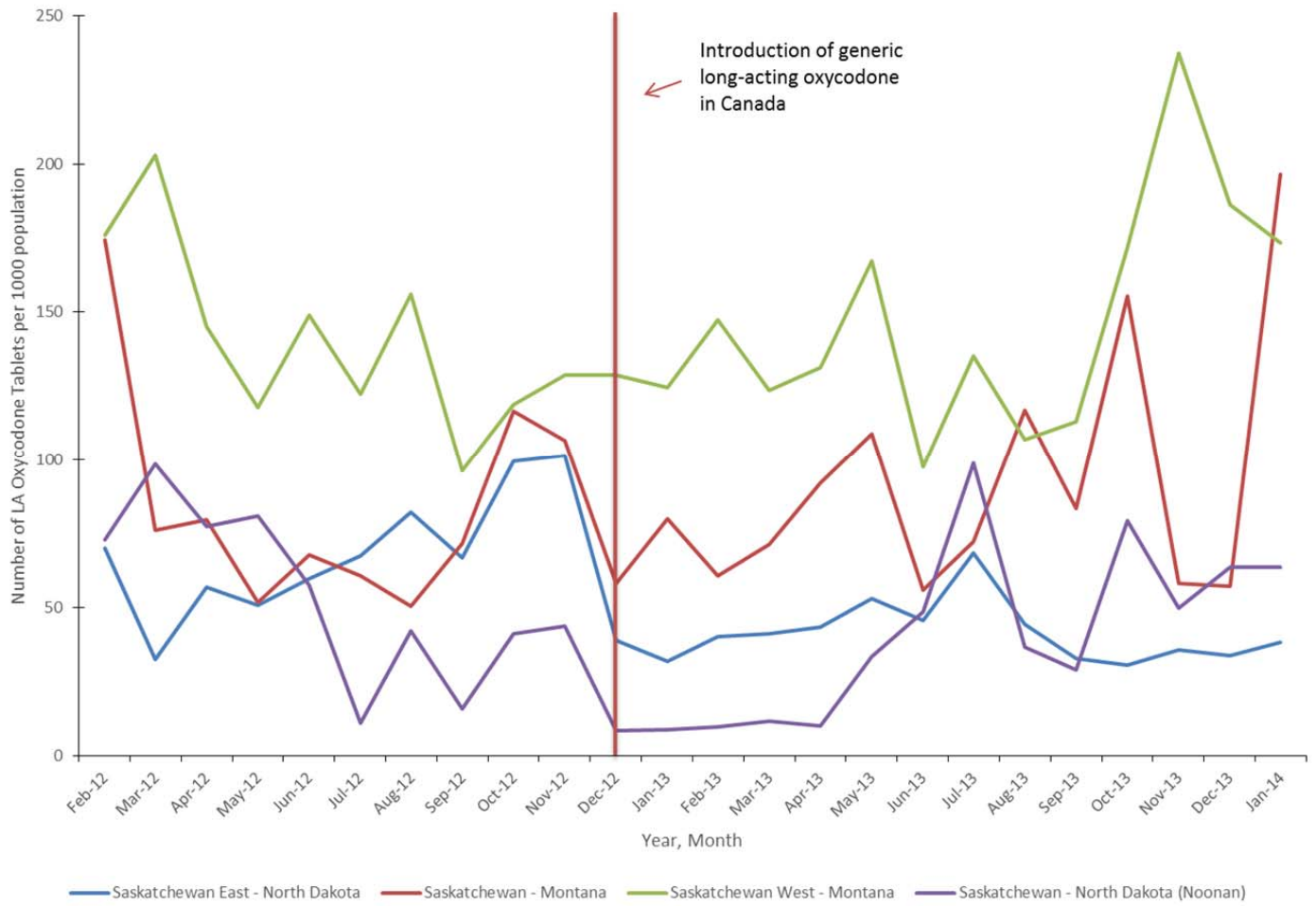
**Figure 1: Volume of Long-Acting Oxycodone Tablet Dispensing in Dispensing Regions Near US-Canada Border Crossings in British Columbia. February 2012 – January 2014**



**Figure 2: Rate of Long-Acting Oxycodone Tablet Dispensing per 1000 population in Dispensing Regions Near US-Canada Border Crossings in Alberta. February 2012 – January 2014**

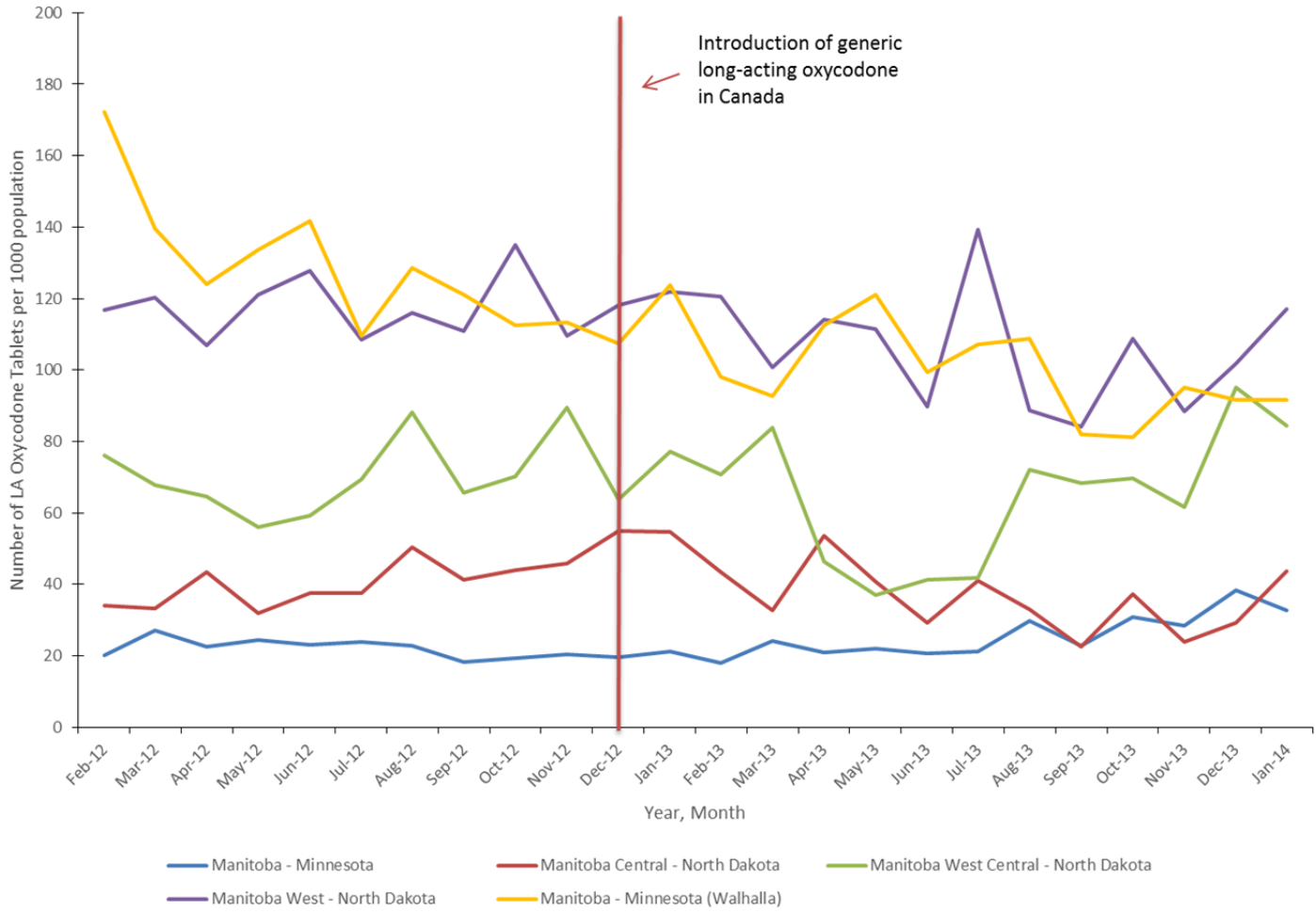


**Figure 3: Rate of Long-Acting Oxycodone Tablet Dispensing per 1000 Population in Dispensing Regions Near US-Canada Border Crossings in Saskatchewan. February 2012 – January 2014**

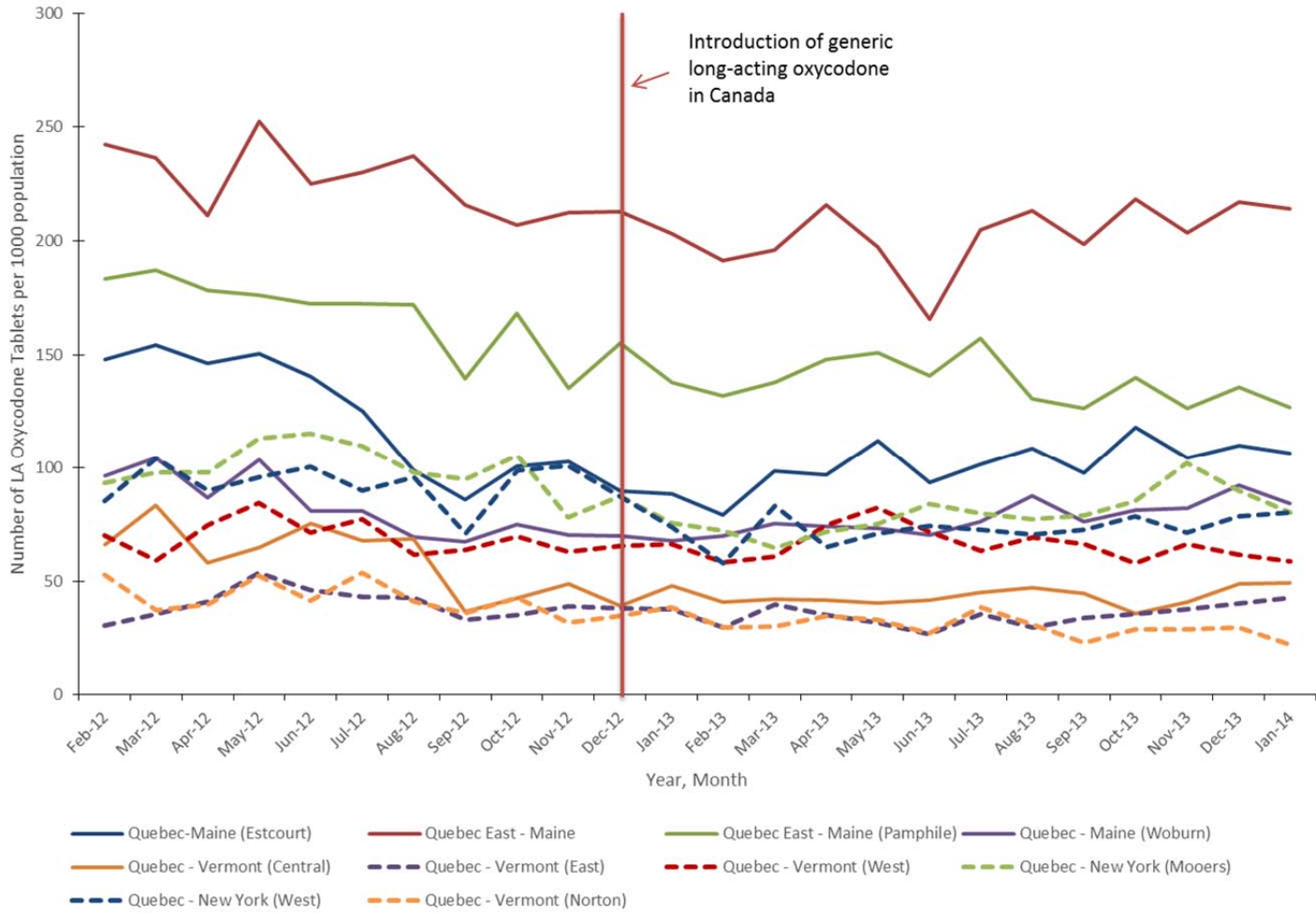




**Figure 4: Rate of Long-Acting Oxycodone Tablet Dispensing per 1000 Population in Dispensing Regions Near US-Canada Border Crossings in Manitoba. February 2012 – January 2014**



**Figure 5: Rate of Long-Acting Oxycodone Tablet Dispensing per 1000 Population in Dispensing Regions Near US-Canada Border Crossings in Quebec. February 2012 – January 2014**



**Figure 6: Rate of Long-Acting Oxycodone Tablet Dispensing per 1000 Population in Dispensing Regions Near US-Canada Border Crossings in New Brunswick. February 2012 – January 2014**

